









An extended and impressive detached house, providing generous accommodation, occupying a substantial plot, on this highly regarded cul-de-sac. Internally the stylish accommodation is accessed via an entrance vestibule leading through to a wonderful reception hall with bespoke staircase to the first floor. To the front, there is a lounge with bay window and feature fireplace, a dining room and a fabulous entertaining area, incorporating a bar and games room. There is a fabulous contemporary kitchen, fitted with an excellent range of units and luxury worksurfaces that opens through to a family room, providing access out on to the rear garden. To the first floor there is a superb master bedroom with en-suite bathroom, two further double bedrooms and an exceptional family bathroom/wc with spa bath and walk in shower. The spacious first floor landing has a staircase continuing up to the top floor where there is another double bedroom and a bathroom/wc. Externally to the front of the house there is lawned garden and a gated entrance provides access to a driveway providing off street parking and access to the garage. The wonderful rear garden is laid mainly to lawn with pleasant, decked areas. We highly recommend a detailed inspection of this outstanding home to appreciate the location, generously proportioned accommodation and beautiful garden.

MAIN ROOMS AND DIMENSIONS

Ground Floor

Access via entrance door to

Entrance Vestibule

Inner glazed door leading through to

Reception Hall



Attractive staircase to first floor, radiator and the impressive hallway opens through to dining room.

Dining Room 13'6" x 11'10" into alcoves



Double glazed windows to both the front and side, radiator.

Lounge 19'4" into bay x 13'10" into alcoves



Double glazed bay window to front, two radiators and a feature fireplace with living flame effect gas fire.

Bar Area 12'10" x 12'2"



This superb entertaining space has a tiled floor, double glazed window to side, radiator and double doors connecting through to family room.

Family Room/Pool Room 14'4" x 11'4"



Double glazed French door leads out to the rear decked area, two radiator and double glazed windows to rear.

Open Plan Kitchen/Diner/Family Area 25'9" x 11'11" maximum measurements



The kitchen is fitted with an excellent range of contemporary units with luxury work surfaces over incorporating an inset sink unit, integrated appliances include electric double oven, electric hob and microwave, fridge freezer and dishwasher.

Family Area



Double glazed French doors leading out to the rear garden and further set leading out onto decked area, double glazed windows and the room opens through to utility.

Utility 8'0" x 5'11"



Space for washing machine, fitted units, tiled floor, radiator and door to shower room.

Visit www.peterheron.co.uk or call 0191 510 3323

Tried. Trusted. Recommended. City Branch 20 Fawcett Street Sunderland SR1 1RH Fulwell Branch 15 Sea Road Fulwell Sunderland SR6 9BS

MAIN ROOMS AND DIMENSIONS

Shower Room



Low level WC, mini washbasin and step in shower cubicle with mains shower over, ladder style radiator and double glazed window.

First Floor Landing

Generous landing built in storage cupboards, staircase continues to the top floor.

Bedroom 1 15'10" x 11'10" into alcove



Double glazed window to front, radiator and door to en-suite.

En-Suite



Washbasin set into vanity unit, free standing bath, chrome ladder style radiator, attractive tiled walls and floor, double glazed window.

Bedroom 2 12'10" x 12'5"



Double glazed window to front and radiator.

Bedroom 3 11'11" into alcoves x 7'3"



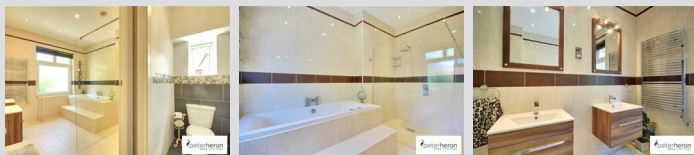
Double glazed window to rear and radiator.

Visit www.peterheron.co.uk or call 0191 510 3323

Tried. Trusted. Recommended. City Branch 20 Fawcett Street Sunderland SR1 1RH Fulwell Branch 15 Sea Road Fulwell Sunderland SR6 9BS

MAIN ROOMS AND DIMENSIONS

Bathroom

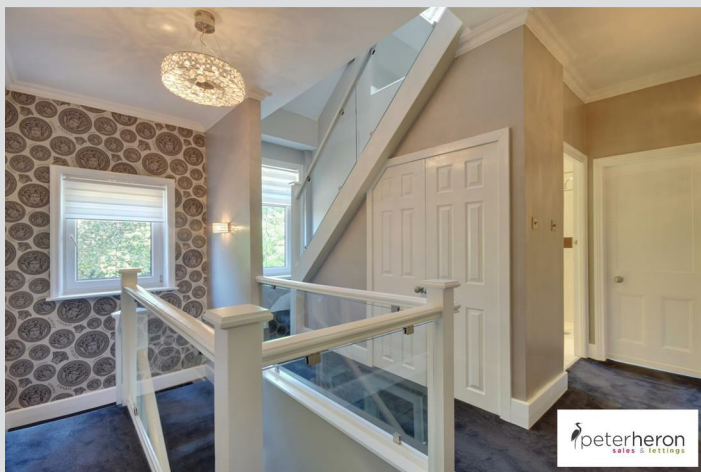


A spacious luxury suite comprising of twin washbasins, Spa style bath and walk in shower area with mains shower over, tiled walls and floor, chrome ladder style radiator and double glazed window.

Separate WC

Low level WC, tiled walls and floor.

Top Floor Landing



Velux window.

Bedroom 4 13'1" x 12'5"



Approx. measurements as sloping ceiling, four Velux windows and radiator.

Bathroom



Low level WC, pedestal washbasin and panel bath with mains shower over, radiator and Velux window.

Outside



Garden to the front with gated access to the driveway providing off street parking, whilst to the rear there is a delightful garden laid mainly to lawn with a decked area.

Garage 14'0" x 14'4"

Attached garage with electric access door and access from the garage to a store area.

Store Area 14'4" x 8'11"

Double glazed door to rear garden, wall mounted boiler and double glazed window.

Council Tax Band

The Council Tax Band is Band E.

Tenure Freehold

We are advised by the Vendors that the property is Freehold. Any prospective purchaser should clarify this with their Solicitor.

Important Notice Part 1

Items described in these particulars are included in the sale, all other items are specifically excluded. We are unable to verify they are in working order and fit for purpose. The Purchaser is advised to obtain verification from their Solicitor or Surveyor. Please note that in the event the purchaser uses the services of Peter Heron Conveyancing in the purchase of their home, Peter Heron Ltd will be paid a completion commission of £179.00 by Movewithus Ltd. Measurements and floor plans shown in these particulars are approximate and as room guides only. They must not be relied upon or taken as accurate. Purchasers must satisfy themselves in this respect.

Peter Heron Ltd for themselves and for the vendors of this property whose agents they are, give notice that:-

The particulars are set out for general guidance only for the intending Purchasers and do not constitute part of an offer or contract. Whilst we endeavour to make our sales particulars accurate and reliable, if there is anything of particular importance which you feel may influence your decision to purchase, please contact the office and we will be pleased to check the information. Do so particularly, if contemplating travelling some distance to view the property.

Visit www.peterheron.co.uk or call 0191 510 3323

Tried. Trusted. Recommended. City Branch 20 Fawcett Street Sunderland SR1 1RH Fulwell Branch 15 Sea Road Fulwell Sunderland SR6 9BS

MAIN ROOMS AND DIMENSIONS

Important Notice Part 2

All descriptions, dimensions, references to conditions and necessary permissions for use and occupation and other details are given in good faith, and are believed to be correct, however any intending purchasers should not rely on them that statements are representations of fact, but must satisfy themselves by inspection or otherwise as to the correctness of each of them. Independent property size verification is recommended.

Lease details, service charges and ground rent (where applicable) are given as a guide only and should be checked and confirmed by your Solicitor prior to exchange of contracts. No person in the employment of Peter Heron Ltd has any authority to make or give any representation or warranty whatever in relation to this property or these particulars, nor to enter into any contract on behalf of Peter Heron Ltd, nor into any contract on behalf of the Vendor. The copyright of all details and photographs remain exclusive to Peter Heron Ltd.

Fawcett Street Viewings

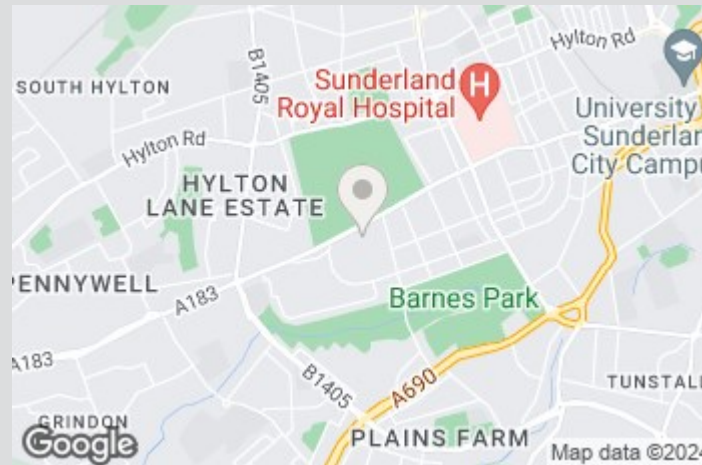
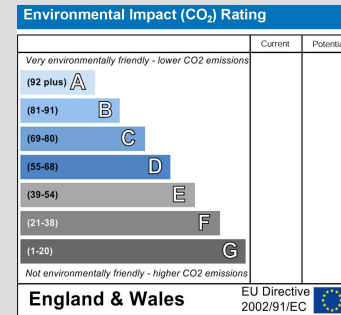
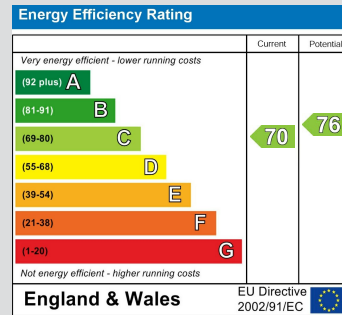
To arrange an appointment to view this property please contact our Fawcett Street branch on 0191 510 3323 or book viewing online at peterheron.co.uk

Opening Times

Monday to Friday 9.00am - 5.00pm Saturday 9.00am - 12noon

Ombudsman

Peter Heron Estate Agents are members of The Property Ombudsman and subscribe to The Property Ombudsman Code of Practice.



Visit www.peterheron.co.uk or call 0191 510 3323

Tried. Trusted. Recommended. City Branch 20 Fawcett Street Sunderland SR1 1RH Fulwell Branch 15 Sea Road Fulwell Sunderland SR6 9BS



Ground Floor



First Floor



Second Floor

6 West Hill