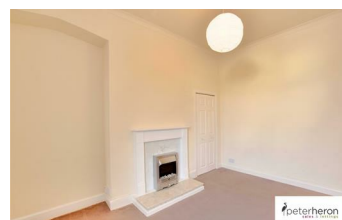


FOR SALE



Welcome to *your* place in Sunderland



Tower Street
Sunderland SR2 8NF

Cottage
Rear Yard
Available Now
No Pets
Council Tax Band A

2 Bedrooms
Close to City Centre
6 Month Minimum Term
EPC Rating E
Move in costs £1190

£595 PCM

Main Rooms and Dimensions

Entrance
Living Room 13'9" x 10'8"
Bedroom 1 13'11" x 13'9"
Bedroom 2 10'5" x 6'6"
Kitchen/Diner 16'0" x 8'0"
Lobby
Bathroom 6'11" x 5'9"
Externally

Lettings Important Notice
Lettings Viewing Arrangements
Opening Hours
Ombudsman

Visit www.peterheron.co.uk or call 0191 510 3323

Tried. Trusted. Recommended.