

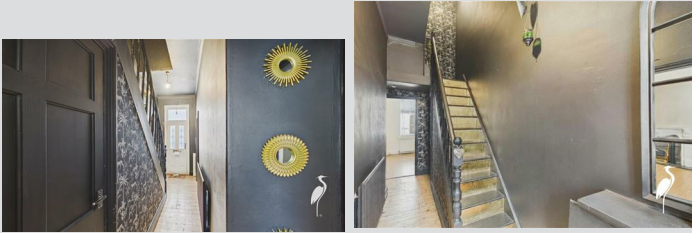
A superb three bedroom mid terrace cottage, providing deceptively spacious and well-appointed accommodation within this popular location. Internally briefly comprising to the ground floor of a hall, an attractive lounge, a modern fitted kitchen, an impressive contemporary bathroom/wc and two bedrooms whilst to the first floor there is a well-proportioned bedroom with a walk in wardrobe. Externally there is a courtyard to the rear. The property is well placed for the shops on Chester Road, local amenities and schools as well as being ideal for Sunderland City Centre, Sunderland Royal Hospital and transport links including Millfield Metro Station. With no upper chain involved, we highly recommend early viewing!

MAIN ROOMS AND DIMENSIONS

Ground Floor

Access via Composite entrance door into

Reception Hall



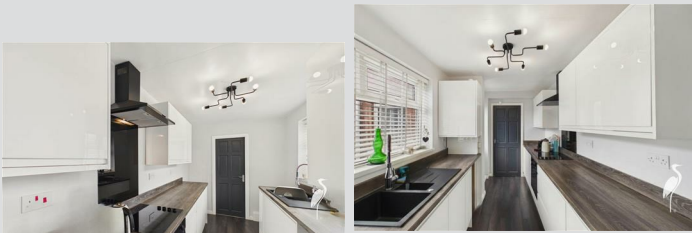
Stairs to first floor with storage under and a radiator.

Lounge



Double glazed window to the rear, feature fireplace and a door to the kitchen.

Kitchen



Range of wall and base units with countertops over incorporating 1 1/2 bowl sink and drainer unit with mixer tap. Integrated oven with electric hob and extractor hood. Space for a fridge freezer and washing machine. Double glazed window and UPVC door to rear. Door to bathroom.

Bedroom 2



Double glazed window to front, feature fireplace and a double radiator.

Bedroom 3



Double glazed window to the rear and a radiator.

Bathroom



Low level WC, wash hand basin set into vanity unit, bath with waterfall shower head, radiator and 2x double glazed windows.

First Floor Landing

Bedroom 1



Double glazed window to front, radiator and opens into the dressing area.

Visit www.peterheron.co.uk or call 0191 510 3323

Tried. Trusted. Recommended. City Branch 20 Fawcett Street Sunderland SR1 1RH Fulwell Branch 15 Sea Road Fulwell Sunderland SR6 9BS

MAIN ROOMS AND DIMENSIONS

Dressing Area



Providing storage space.

Outside



Low maintenance courtyard with wooden gate to access rear lane.

Council Tax Band

The Council Tax Band is Band A.

Tenure Freehold

We are advised by the Vendors that the property is Freehold. Any prospective purchaser should clarify this with their Solicitor.

Important Notice - Particulars

Peter Heron Ltd for themselves and for the vendors of this property whose agents they are, give notice that:- The particulars are set out for general guidance only for the intending Purchasers and do not constitute part of an offer or contract. Whilst we endeavour to make our sales particulars accurate and reliable, if there is anything of particular importance which you feel may influence your decision to purchase, please contact the office and we will be pleased to check the information. Do so particularly, if contemplating travelling some distance to view the property. All descriptions, dimensions, references to conditions and necessary permissions for use and occupation and other details are given in good faith, and are believed to be correct, however any intending purchasers should not rely on them that statements are representations of fact, but must satisfy themselves by inspection or otherwise as to the correctness of each of them. Independent property size verification is recommended.

Lease details, service charges and ground rent (where applicable) are given as a guide only and should be checked and confirmed by your Solicitor prior to exchange of contracts. No person in the employment of Peter Heron Ltd has any authority to make or give any representation or warranty whatever in relation to this property or these particulars, nor to enter into any contract on behalf of Peter Heron Ltd, nor into any contract on behalf of the Vendor. The copyright of all details and photographs remain exclusive to Peter Heron Ltd.

Please note that in the event the purchaser uses the services of Peter Heron Conveyancing in the purchase of their home, Peter Heron Ltd will be paid a completion commission of £300.00 by Movewithus Ltd.

Fawcett Street Viewings

To arrange an appointment to view this property please contact our Fawcett Street branch on 0191 510 3323 or book viewing online at peterheron.co.uk

Opening Times

Monday to Friday 9.00am - 5.00pm Saturday 9.00am - 12noon

Ombudsman

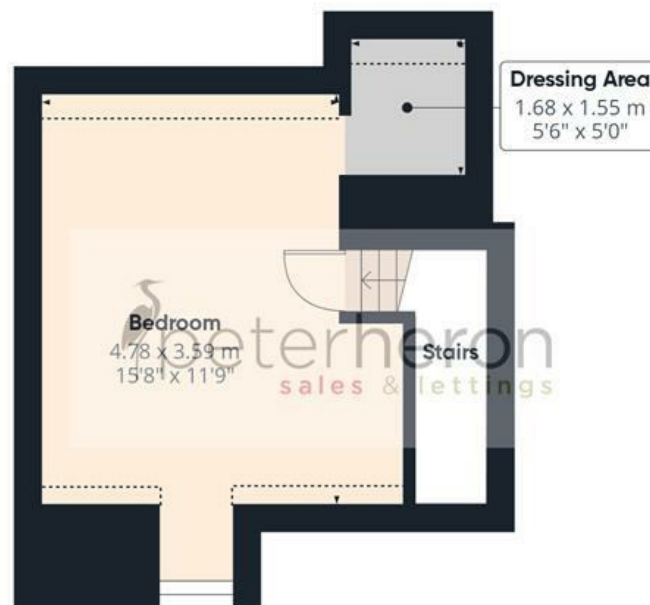
Peter Heron Estate Agents are members of The Property Ombudsman and subscribe to The Property Ombudsman Code of Practice.

Energy Efficiency Rating		Environmental Impact (CO ₂) Rating	
	Current	Potential	
Very energy efficient - lower running costs			
(92 plus) A			Very environmentally friendly - lower CO ₂ emissions
(81-91) B			(92 plus) A
(69-80) C			(81-91) B
(55-68) D			(69-80) C
(39-54) E			(55-68) D
(21-38) F			(39-54) E
(1-20) G			(21-38) F
Not energy efficient - higher running costs			
England & Wales		EU Directive 2002/91/EC	EU Directive 2002/91/EC



Visit www.peterheron.co.uk or call 0191 510 3323

Tried. Trusted. Recommended. City Branch 20 Fawcett Street Sunderland SR1 1RH Fulwell Branch 15 Sea Road Fulwell Sunderland SR6 9BS



Approximate total area⁽¹⁾

78.4 m²

845 ft²

Reduced headroom

2 m²

22 ft²

(1) Excluding balconies and terraces

Reduced headroom

..... Below 1.5 m/5 ft

Calculations reference the RICS IPMS 3C standard. Measurements are approximate and not to scale. This floor plan is intended for illustration only.

GIRAFFE360

