









An attractive two / three bedroom semi-detached Dutch bungalow, enjoying a superb position within this sought-after residential area. Internally the accommodation on the ground floor includes a hall, lounge, kitchen, connecting through to a conservatory, two bedrooms (one could be utilised as an additional reception room if required) and a wash room/wc whilst to the first floor there is a further double bedroom and a bathroom/wc. Externally there is a garden to the front with a driveway and a delightful garden to the rear with a lawn and patio. This ever popular and convenient location is ideal for access to local amenities, shops and schools as well as offering excellent transport connections to surrounding areas. The property is available with no upper chain involved, early viewing is highly recommended.

# MAIN ROOMS AND DIMENSIONS

## Ground Floor

Access via UPVC double glazed entrance door to reception hall.

## Reception Hall

Stairs to the first floor, storage cupboard and doors to the kitchen, wash room/WC, lounge and bedrooms one and two.

## Lounge 17'7" x 11'9"



Double glazed window to the front, a radiator and feature gas fire.

## Kitchen 13'7" x 8'3"



Fitted with wall and base units with work surface over incorporating a sink and drainer unit with mixer tap. Integrated oven and hob with extractor over, integrated microwave oven, space for a washing machine, wall mounted boiler concealed by cupboard, tiled floor and part tiled walls, double glazed window to side and rear, radiator and a door to the conservatory.

## Conservatory 9'0" x 9'9"



Double glazed windows to the front side and rear, tiled floor and double glazed door to the rear garden.

## Bedroom 1 11'10" x 11'5"



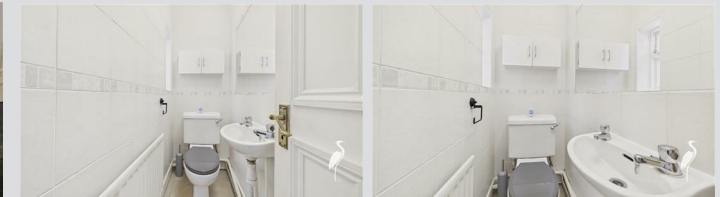
Double glazed window to the front and a radiator.

## Bedroom 2 / Dining Room 16'0" x 11'7"



This versatile room could be utilised as either a bedroom or additional reception room, it has a central double glazed French doors to the rear garden with double glazed windows to either side and a radiator.

## Wash Room/WC



Low level WC, mini wash hand basin, tiled walls and floor, radiator and a small window to the side.

## First Floor Landing

Access point to loft and doors to the bathroom and bedroom three.

## Bedroom 3 16'4" x 9'10"



Double glazed window to the front, radiator, storage cupboard and fitted wardrobes.

## Bathroom



Low level WC, wash hand basin, corner bath with hand held shower, part tiled walls, double glazed window and a radiator.

Visit [www.peterheron.co.uk](http://www.peterheron.co.uk) or call **01915103323**

**Tried. Trusted. Recommended.** City Branch 20 Fawcett Street Sunderland SR1 1RH Fulwell Branch 15 Sea Road Fulwell Sunderland SR6 9BS

# MAIN ROOMS AND DIMENSIONS

## Outside



Garden to the front with a driveway whilst to the rear there is a delightful garden with a lawn, patio and shed.

## Council Tax Band

The Council Tax Band is Band C.

## Tenure Freehold

We are advised by the Vendors that the property is Freehold. Any prospective purchaser should clarify this with their Solicitor.

## Important Notice - Particulars

Peter Heron Ltd for themselves and for the vendors of this property whose agents they are, give notice that:-  
The particulars are set out for general guidance only for the intending Purchasers and do not constitute part of an offer or contract. Whilst we endeavour to make our sales particulars accurate and reliable, if there is anything of particular importance which you feel may influence your decision to purchase, please contact the office and we will be pleased to check the information. Do so particularly, if contemplating travelling some distance to view the property. All descriptions, dimensions, references to conditions and necessary permissions for use and occupation and other details are given in good faith, and are believed to be correct, however any intending purchasers should not rely on them that statements are representations of fact, but must satisfy themselves by inspection or otherwise as to the correctness of each of them. Independent property size verification is recommended.

Lease details, service charges and ground rent (where applicable) are given as a guide only and should be checked and confirmed by your Solicitor prior to exchange of contracts. No person in the employment of Peter Heron Ltd

has any authority to make or give any representation or warranty whatever in relation to this property or these particulars, nor to enter into any contract on behalf of Peter Heron Ltd, nor into any contract on behalf of the Vendor. The copyright of all details and photographs remain exclusive to Peter Heron Ltd.

Please note that in the event the purchaser uses the services of Peter Heron Conveyancing in the purchase of their home, Peter Heron Ltd will be paid a completion commission of £300.00 by Movewithus Ltd.

## Fawcett Street Viewings

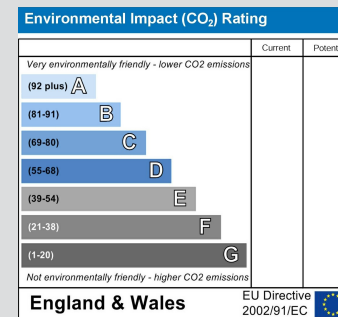
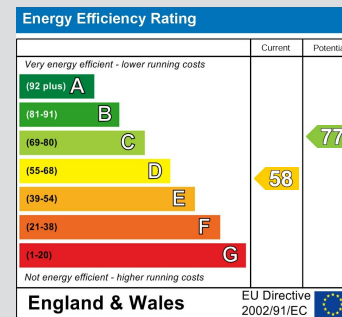
To arrange an appointment to view this property please contact our Fawcett Street branch on 0191 510 3323 or book viewing online at peterheron.co.uk

## Opening Times

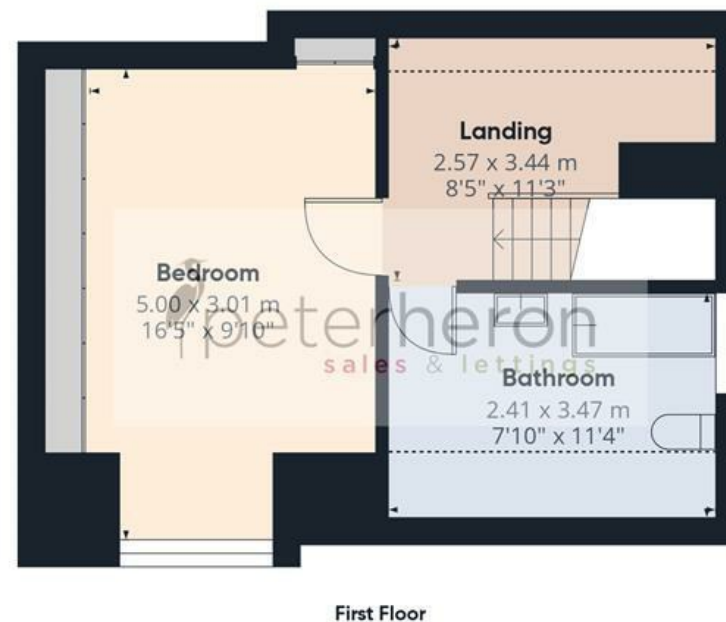
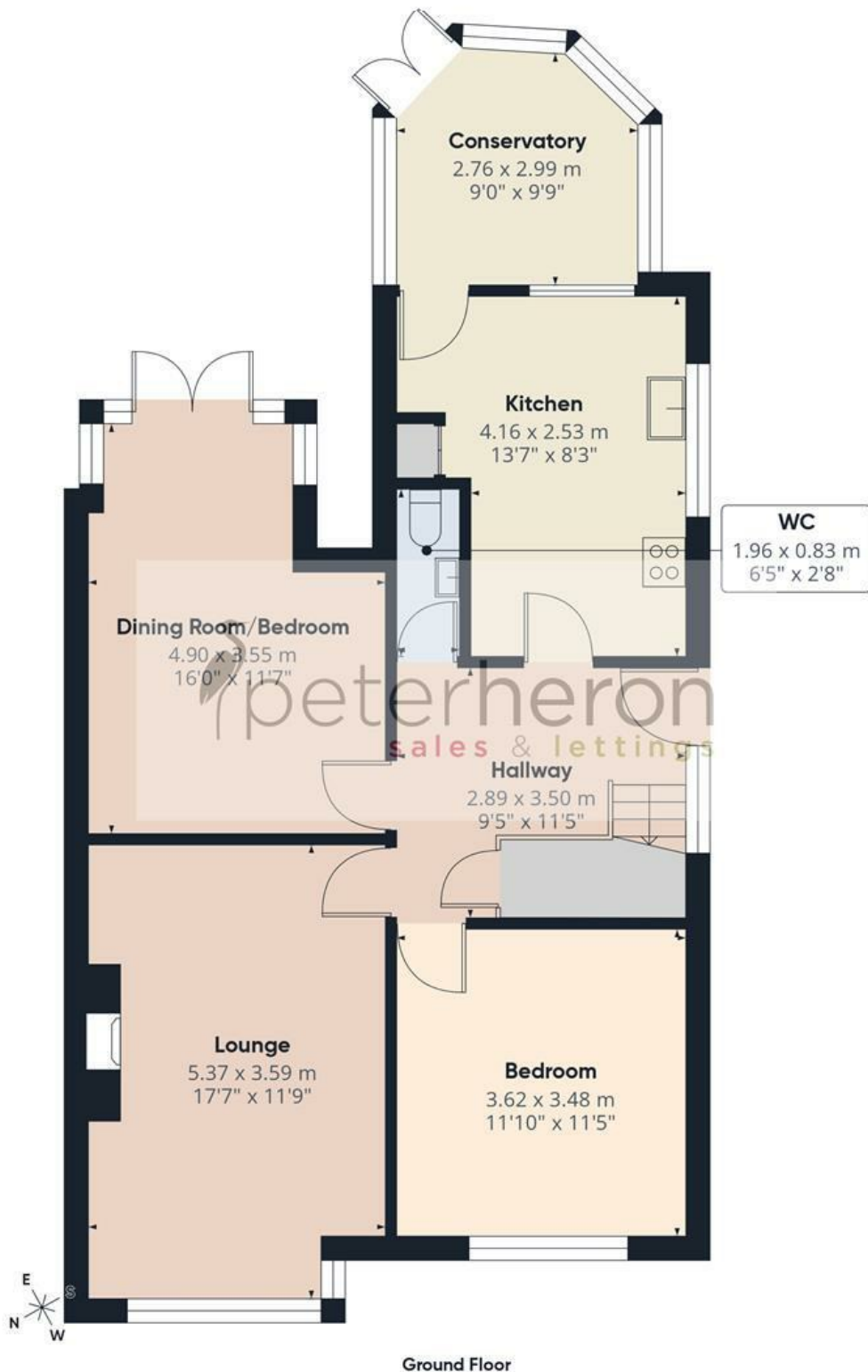
Monday to Friday 9.00am - 5.00pm Saturday 9.00am - 12noon

## Ombudsman

Peter Heron Estate Agents are members of The Property Ombudsman and subscribe to The Property Ombudsman Code of Practice.



Visit [www.peterheron.co.uk](http://www.peterheron.co.uk) or call 01915103323



**Approximate total area<sup>(1)</sup>**

109 m<sup>2</sup>

1173 ft<sup>2</sup>

**Reduced headroom**

3.4 m<sup>2</sup>

36 ft<sup>2</sup>

(1) Excluding balconies and terraces

Reduced headroom

Below 1.5 m/5 ft

Calculations reference the RICS IPMS 3C standard. Measurements are approximate and not to scale. This floor plan is intended for illustration only.