









A spacious three bedroom semi-detached house with a generous rear garden within this ever popular location, available for sale with no upper chain involved. Internally the accommodation on the ground floor includes a reception hall with staircase to the first floor, two well-proportioned reception rooms, kitchen and a conservatory. To the first floor there are three bedrooms and a family bathroom/wc. This location is ideal for access to local amenities, shops and schools as well as offering excellent connections to Sunderland City Centre and major road links. Early viewing is essential to appreciate the location, garden and potential this superb home has to offer.

# MAIN ROOMS AND DIMENSIONS

## Ground Floor

Access via wooden entrance door.

### Reception Hall



Double glazed window to side, stairs to first floor with storage under and radiator.

### Lounge 13'8" x 12'9"



Double glazed bay window to front elevation, feature fireplace and radiator. Double sliding doors to dining room.

### Dining Room 13'7" x 11'1"



Double glazed bay window to rear and radiator. Door to Kitchen.

### Kitchen 5'11" x 15'1"



Range of wall and base units with countertops over incorporating 1 1/2 bowl stainless steel sink and drainer unit with mixer tap. Integrated oven with gas hob and hood. Space for a fridge freezer and washing machine. 2x radiators, storage cupboard. Double glazed window rear and UPVC door to conservatory.

### Conservatory 6'6" x 12'2"



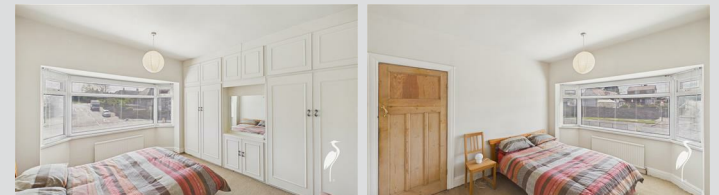
Double glazed windows and UPVC door to rear. Radiator.

## First Floor Landing



Double glazed window to side and radiator.

### Bedroom 1 9'10" x 13'0"



Double glazed bay window to front elevation, built in wardrobes and radiator.

### Bedroom 2 10'7" x 11'1"



Double glazed window rear, 2x storage cupboards and radiator.

Visit [www.peterheron.co.uk](http://www.peterheron.co.uk) or call 0191 510 3323

Tried. Trusted. Recommended. City Branch 20 Fawcett Street Sunderland SR1 1RH Fulwell Branch 15 Sea Road Fulwell Sunderland SR6 9BS

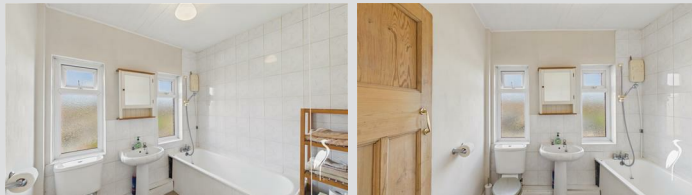
# MAIN ROOMS AND DIMENSIONS

## Bedroom 3 7'10" x 7'4"



Double glazed window to front elevation and radiator.

## Bathroom



Low level WC, washbasin and bath with shower over, 2x double glazed windows rear and radiator.

## Outside



Generously sized rear garden with lawned and block paved areas benefitting from a shed and an electric roller shutter providing off street parking. Attractive front garden laid mainly to lawn with a block paved walkway.

## Council Tax Band

The Council Tax Band is Band C.

## Tenure Freehold

We are advised by the Vendors that the property is Freehold. Any prospective purchaser should clarify this with their Solicitor.

## Important Notice - Particulars

Peter Heron Ltd for themselves and for the vendors of this property whose agents they are, give notice that:- The particulars are set out for general guidance only for the intending Purchasers and do not constitute part of an offer or contract. Whilst we endeavour to make our sales particulars accurate and reliable, if there is anything of particular importance which you feel may influence your decision to purchase, please contact the office and we will be pleased to check the information. Do so particularly, if contemplating travelling some distance to view the property. All descriptions, dimensions, references to conditions and necessary permissions for use and occupation and other details are given in good faith, and are believed to be correct, however any intending purchasers should not rely on them that statements are representations of fact, but must satisfy themselves by inspection or otherwise as to the correctness of each of them. Independent property size verification is recommended.

Lease details, service charges and ground rent (where applicable) are given as a guide only and should be checked and confirmed by your Solicitor prior to exchange of contracts. No person in the employment of Peter Heron Ltd has any authority to make or give any representation or warranty whatever in relation to this property or these particulars, nor to enter into any contract on behalf of Peter Heron Ltd, nor into any contract on behalf of the Vendor. The copyright of all details and photographs remain exclusive to Peter Heron Ltd.

Please note that in the event the purchaser uses the services of Peter Heron Conveyancing in the purchase of

their home, Peter Heron Ltd will be paid a completion commission of £300.00 by Movewithus Ltd.

## Fawcett Street Viewings

To arrange an appointment to view this property please contact our Fawcett Street branch on 0191 510 3323 or book viewing online at peterheron.co.uk

## Opening Times

Monday to Friday 9.00am - 5.00pm Saturday 9.00am - 12noon

## Ombudsman

Peter Heron Estate Agents are members of The Property Ombudsman and subscribe to The Property Ombudsman Code of Practice.

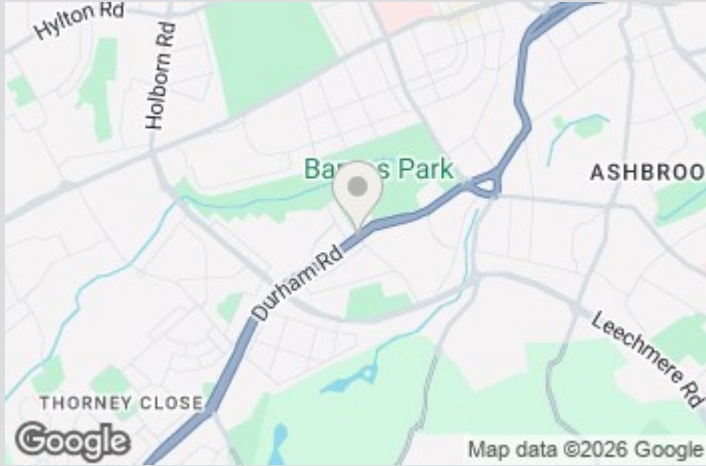
Energy Efficiency Rating		Current	Potential
Very energy efficient - lower running costs			
(92 plus) A			
(81-91) B			
(69-80) C			
(55-68) D			
(39-54) E			
(21-38) F			
(1-20) G			
Not energy efficient - higher running costs			
England & Wales		EU Directive 2002/91/EC	

Environmental Impact (CO <sub>2</sub> ) Rating		Current	Potential
Very environmentally friendly - lower CO <sub>2</sub> emissions			
(92 plus) A			
(81-91) B			
(69-80) C			
(55-68) D			
(39-54) E			
(21-38) F			
(1-20) G			
Not environmentally friendly - higher CO <sub>2</sub> emissions			
England & Wales		EU Directive 2002/91/EC	

Visit [www.peterheron.co.uk](http://www.peterheron.co.uk) or call 0191 510 3323

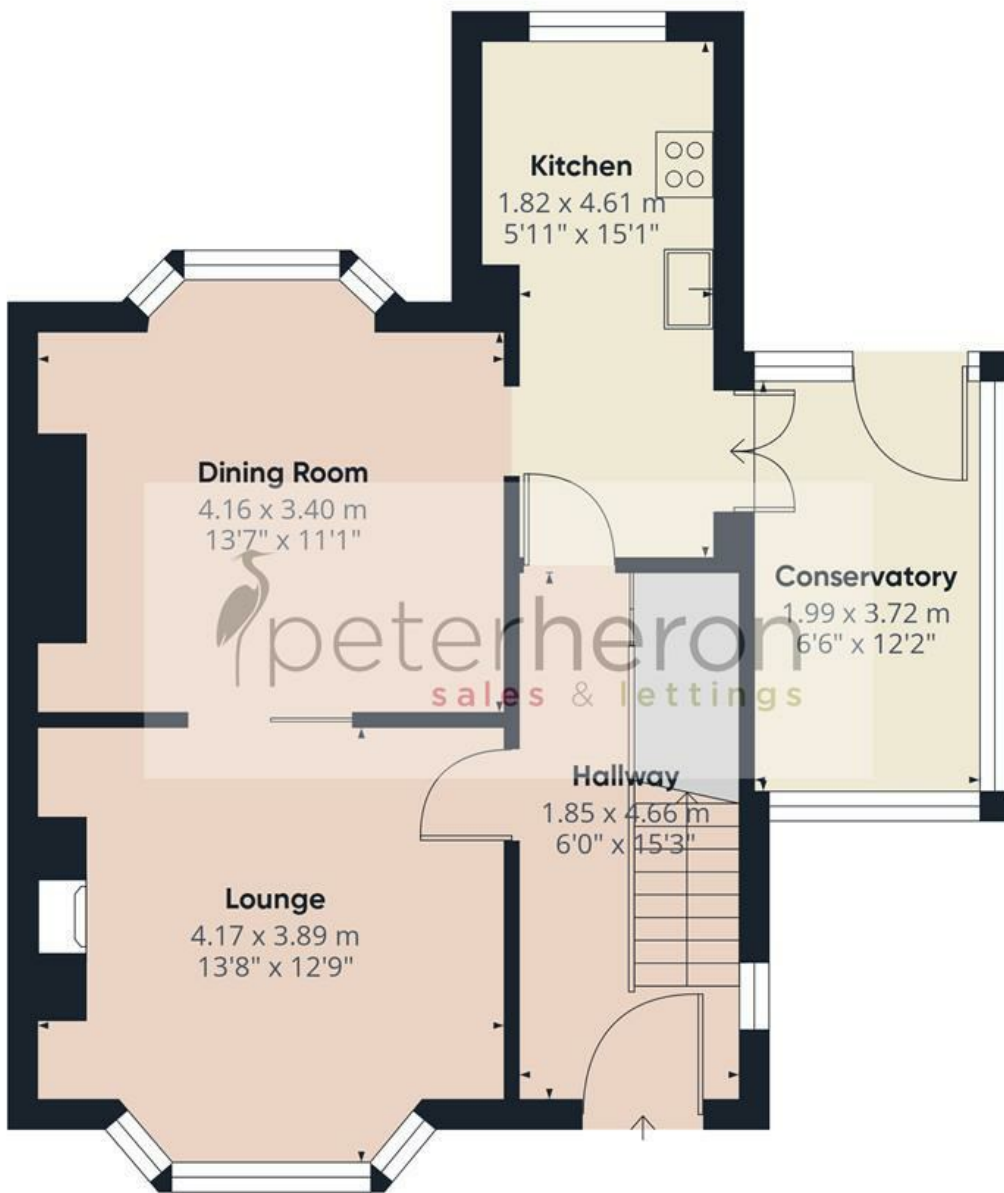
Tried. Trusted. Recommended. City Branch 20 Fawcett Street Sunderland SR1 1RH Fulwell Branch 15 Sea Road Fulwell Sunderland SR6 9BS

## MAIN ROOMS AND DIMENSIONS



Visit [www.peterheron.co.uk](http://www.peterheron.co.uk) or call **0191 510 3323**

**Tried. Trusted. Recommended.** City Branch 20 Fawcett Street Sunderland SR1 1RH Fulwell Branch 15 Sea Road Fulwell Sunderland SR6 9BS



Ground Floor



First Floor

Approximate total area<sup>(1)</sup>

93 m<sup>2</sup>  
1001 ft<sup>2</sup>

(1) Excluding balconies and terraces

Calculations reference the RICS IPMS 3C standard. Measurements are approximate and not to scale. This floor plan is intended for illustration only.

