



 peterheron
sales & lettings

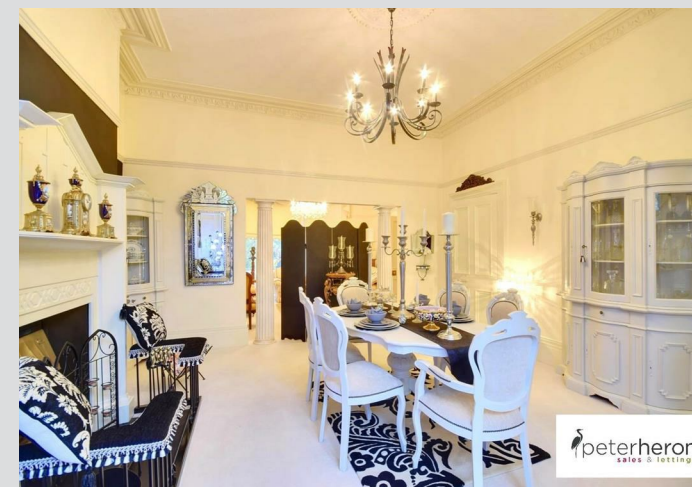
 peterheron
sales & lettings

Thornhill Terrace, Thornhill, Sunderland

£395,000







A magnificent three storey mid terrace Victorian Townhouse with great character and a wealth of charm, featuring decorative plasterwork, tall ceilings, deep skirting boards and sash windows, situated on the highly regarded Thornhill Terrace. Internally the beautifully appointed accommodation is accessed via an entrance vestibule leading through to a most impressive reception hall with grand staircase to the first floor. There are two generous reception rooms, both with feature fireplaces, a living room / breakfast room, opening through to a fabulous high quality kitchen, fitted with an excellent range of units and granite worksurfaces. A useful utility and a cloakroom/wc complete the ground floor accommodation. To the first floor there is a washroom/wc and three bedrooms, one with an en-suite shower room/wc, moving up to the half landing is a modern family bathroom/wc and to the top floor a stunning master bedroom with a luxury en-suite bathroom/wc, incorporating a shower cubicle. Externally there is a wonderful, landscaped garden to the front with artificial grass, patio area and mature planting whilst to the rear a superb courtyard with patio, gravelled areas and planted borders. There is garage and a car port, both with remote control roller shutter access doors. This location is ideal for local amenities, well regarded schools, shopping facilities and also for access into Sunderland City Centre and transport connections including the Metro system. We highly advise arranging a detailed inspection to fully appreciate this exceptional home.

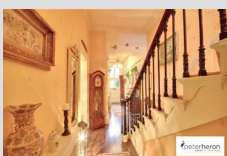
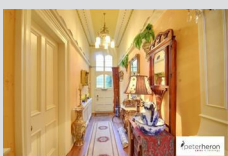
MAIN ROOMS AND DIMENSIONS

Ground Floor



Beautiful Gothic design part glazed door to

Reception Hall



A most impressive reception hall with detailed covered cornicing to ceiling and wrought iron turned handrail staircase and a radiator.

Drawing Room 17'5" x 18'9"



Original sliding sash windows shutters and secondary double glazing. Beautiful period marble fireplace with cast iron insert, coved cornicing and rose to ceiling, picture rail, double radiator.

Dining Room 18'9" x 15'7"



Bay with architraving, sliding sash windows, door leading out to the rear gardens, secondary double glazing, double radiator, original coved cornicing to ceiling, picture rail, beautiful original fireplace with cast iron insert and stone hearth.

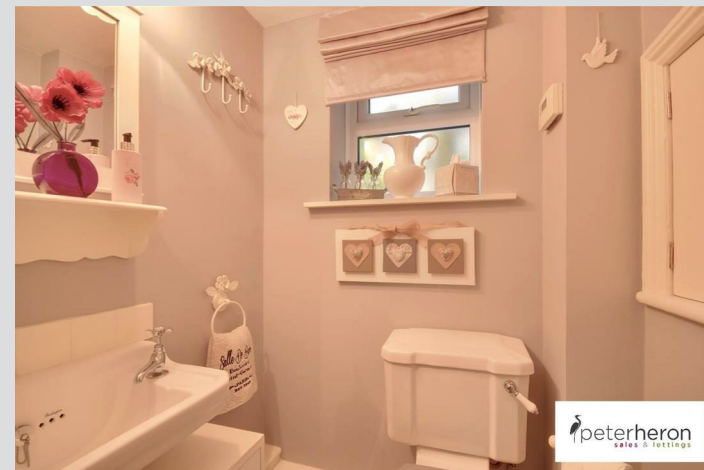
Inner Lobby

Stairs leading down to basement.

Basement 7'6" x 16'0"

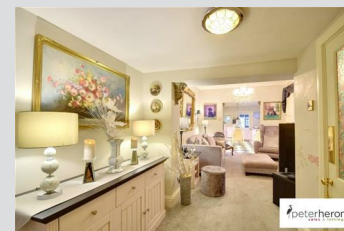
Brilliant space for storage etc.

Ground Floor Cloakroom/WC



Low level WC and wall mounted washbasin - attractive period style white suite with chrome taps and tiled splashbacks, double glazed window to side elevation, vinyl flooring.

Living Room / Breakfast Room 10'7" x 14'2"



A versatile room with coved cornicing to ceiling, double radiator, double glazed sash style windows to side elevation with working shutters and secondary double glazing, double radiator. This is a favourite space of our clients and serves as a living area perfect for families and entertaining. The room opens through to;

Visit www.peterheron.co.uk or call 0191 510 3323

Tried. Trusted. Recommended. City Branch 20 Fawcett Street Sunderland SR1 1RH Fulwell Branch 15 Sea Road Fulwell Sunderland SR6 9BS

MAIN ROOMS AND DIMENSIONS

Kitchen 10'0" x 14'4"



Beautifully crafted with an extensive range of base and eye level units with solid granite working surfaces, Belfast sink with granite drainer and period style mixer taps, tiled splashbacks and downlighting. There is space for a range style cooker and for an American style fridge freezer, an integrated dishwasher, tiled floor, double glazed window to side elevation, two additional single glazed window with secondary double glazing to side and rear elevations, single radiator, part glazed door to

Utility 7'8" x 9'4"



Base units with coloured working surfaces incorporating single drainer sink unit with mixer taps, plumbing for

automatic washing machine, space for fridge freezer, integrated wine rack, vinyl flooring, double glazed windows to side and rear elevations, part glazed door leading out into beautiful rear courtyard.

Half Landing

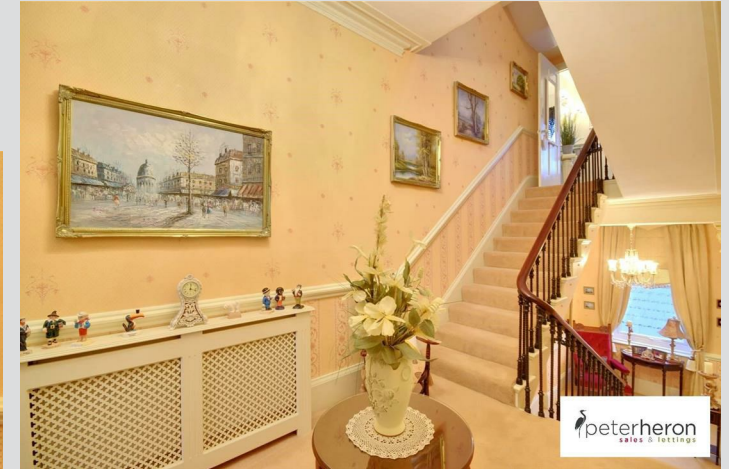


Double glazed window to rear elevation, coved cornice to ceiling, original corbels, dado rail.

Washroom

Low level WC and wall mounted washbasin - white suite with single glazed window to rear elevation, vinyl flooring, tiled splashbacks, wall mounted gas combination boiler serving hot water and radiators.

First Floor Landing



Coved cornice to ceiling and radiator.

Bedroom 2 (rear) 15'8" x 16'0"



Original sliding sash windows with secondary glazed units, single radiator and coved cornice to ceiling. Incorporating

Visit www.peterheron.co.uk or call 0191 510 3323

Tried. Trusted. Recommended. City Branch 20 Fawcett Street Sunderland SR1 1RH Fulwell Branch 15 Sea Road Fulwell Sunderland SR6 9BS

MAIN ROOMS AND DIMENSIONS

En-Suite Shower Room



Low level WC, washbasin and double shower cubicle - attractive suite with panelled walls to dado level, halogen downlights, heated towel rail.

Bedroom 3 (front) 14'11" x 15'8"



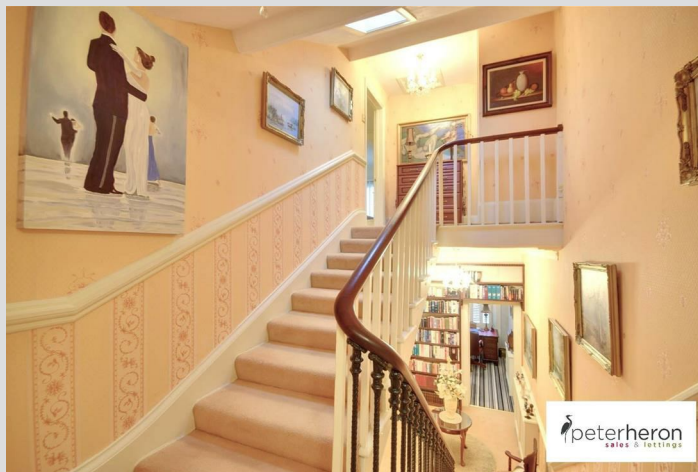
Sliding sash windows to front elevation with original architraving and secondary glazed units, beautiful open views over the gardens and St Anthony's Girls School and Convent beyond. Built in wardrobes, original marble fireplace with cast iron insert and stone hearth, coved cornicing to ceiling, single radiator.

Bedroom 4 (front) 8'0" x 10'9"



Sliding sash windows to front elevation with original architraving, coved cornicing to ceiling and radiator.

Half Landing



Family Bathroom 4'3" x 11'1"

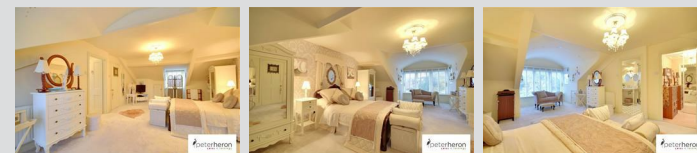


Low level WC, wall mounted washbowl with glass shelving and pedestal mixer taps, free standing rolled edge claw foot bath with shower mixer - beautiful white suite with stripped and polished floorboards, double glazed window to rear elevation, wall mounted extractor unit. Electric shaving point, wall mounted heated towel rail.

Second Floor Landing

Skylight and built in wardrobes with sliding mirror fronted doors,

Master Bedroom 14'0" x 31'11"



Maximum dimensions. To the front the large windows have secondary glazed units and provide beautiful open views to the front. To the rear the timber framed double glazed window is frosted allowing the optimum in privacy. Double radiator, Eaves storage cupboards, second single radiator.

Visit www.peterheron.co.uk or call 0191 510 3323

Tried. Trusted. Recommended. City Branch 20 Fawcett Street Sunderland SR1 1RH Fulwell Branch 15 Sea Road Fulwell Sunderland SR6 9BS

MAIN ROOMS AND DIMENSIONS

En-Suite Bathroom 7'3" x 10'2"



Low level WC, Regency style free standing washbasin with mixer taps, free standing rolled edge claw foot bath with shower mixer, large walk in shower enclosure, large rose and separate shower riser - beautiful white suite with wall mounted heated towel rail, single radiator, secondary double glazed dormer windows to front elevation.

Front Exterior



Boasting magnificent mature gardens to front with a southerly aspect, artificial grass, well established borders with an impressive selection of planting. In addition there is a patio seating area with beautiful views over the garden.

Rear Exterior



The magnificent enclosed courtyard to the rear, an impressive selection of mature plants and beautiful raised borders, in addition to a delightful patio seating. External lighting and external cold water supply together with security lighting. Carport with remote control electric roller shutter door, 9'6" x 21'0".

Garage 13'7 x 17'6

GARAGE with remote control electric roller shutter door, storage facility within the roof space, base and eye level units, working surfaces and ample electric points and sockets, part glazed door leading into the rear courtyard.

Important Notice

Peter Heron Ltd for themselves and for the vendors of this property whose agents they are, give notice that:- The particulars are set out for general guidance only for the intending Purchasers and do not constitute part of an offer or contract. Whilst we endeavour to make our sales particulars accurate and reliable, if there is anything of particular importance which you feel may influence your decision to purchase, please contact the office and we will be pleased to check the information. Do so particularly, if contemplating travelling some distance to view the property. All descriptions, dimensions, references to conditions and necessary permissions for use and occupation and other details are given in good faith, and are believed to be correct, however any intending purchasers should not rely on them that statements are representations of fact, but must satisfy themselves by inspection or otherwise as to the correctness of each of them. Independent property size verification is recommended.

Lease details, service charges and ground rent (where applicable) are given as a guide only and should be checked

and confirmed by your Solicitor prior to exchange of contracts. No person in the employment of Peter Heron Ltd has any authority to make or give any representation or warranty whatever in relation to this property or these particulars, nor to enter into any contract on behalf of Peter Heron Ltd, nor into any contract on behalf of the Vendor. The copyright of all details and photographs remain exclusive to Peter Heron Ltd.

Please note that in the event the purchaser uses the services of Peter Heron Conveyancing in the purchase of their home, Peter Heron Ltd will be paid a completion commission of £210.00 by Movewithus Ltd.

Fawcett Street Viewings

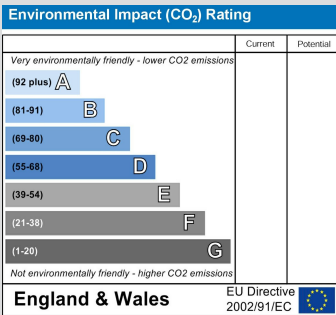
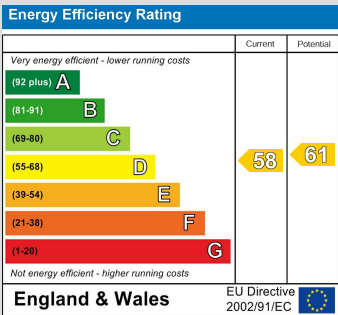
To arrange an appointment to view this property please contact our Fawcett Street branch on 0191 510 3323 or book viewing online at peterheron.co.uk

Opening Times

Monday to Friday 9.00am - 5.00pm Saturday 9.00am - 12noon

Ombudsman

Peter Heron Estate Agents are members of The Property Ombudsman and subscribe to The Property Ombudsman Code of Practice.



Visit www.peterheron.co.uk or call 0191 510 3323

Tried. Trusted. Recommended. City Branch 20 Fawcett Street Sunderland SR1 1RH Fulwell Branch 15 Sea Road Fulwell Sunderland SR6 9BS

MAIN ROOMS AND DIMENSIONS



Visit www.peterheron.co.uk or call **0191 510 3323**

Tried. Trusted. Recommended. **City Branch** 20 Fawcett Street Sunderland SR1 1RH **Fulwell Branch** 15 Sea Road Fulwell Sunderland SR6 9BS



Ground Floor
Approximate Floor Area
(101.74 sq.m)



First Floor
Approximate Floor Area
(71.40 sq.m)



Second Floor
Approximate Floor Area
(51.63 sq.m)

